

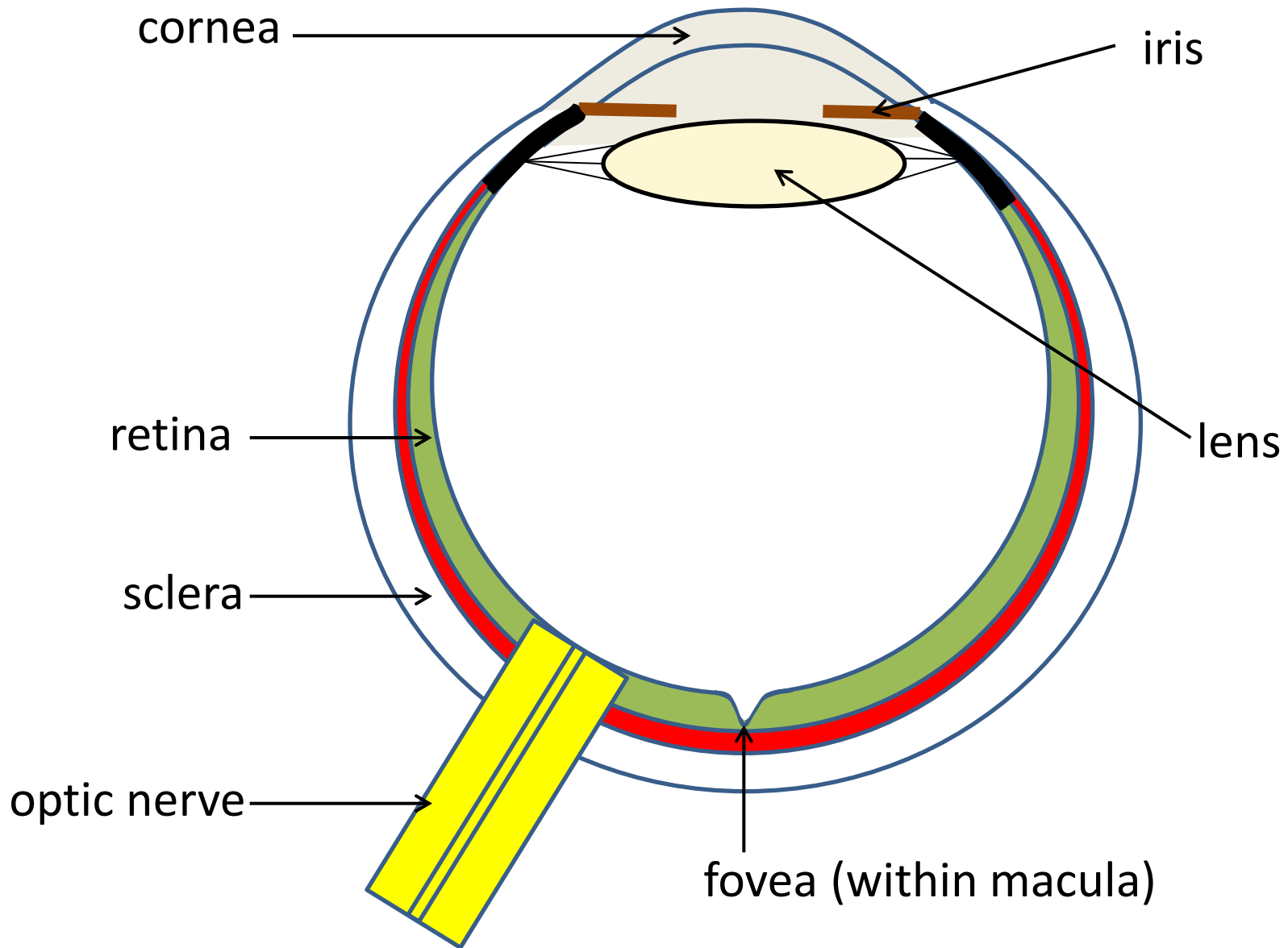
3rd National Alport Information Day
Birmingham, 7 Feb 2015

Alport Syndrome and the Eye

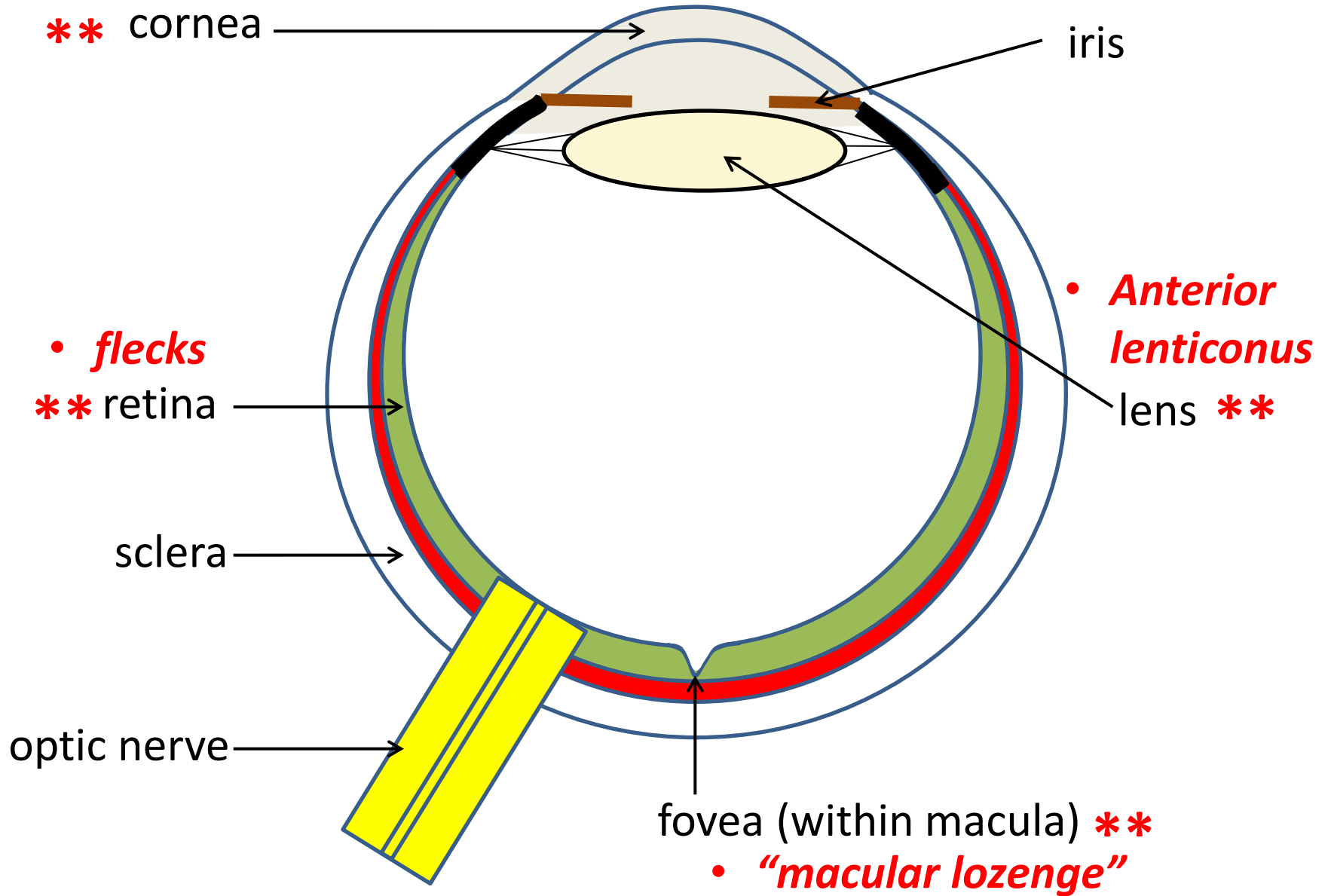
Omar Mahroo, Moin Mohamed
St Thomas' Hospital, London

Outline

- A bit about the eye
- Effects of Alport Syndrome on the eye
- What can we treat?
- Can eye doctors help diagnosis?
 - Lenticonus
 - Retinal changes
- Our research



- **Recurrent corneal erosion**
- **Posterior polymorphous dystrophy**



What can we treat?

- Recurrent corneal erosion
 - Attempt to relieve symptoms of pain and watering
- Anterior lenticonus
 - Lens exchange (cataract surgery)
 - Life-changing restoration of vision!

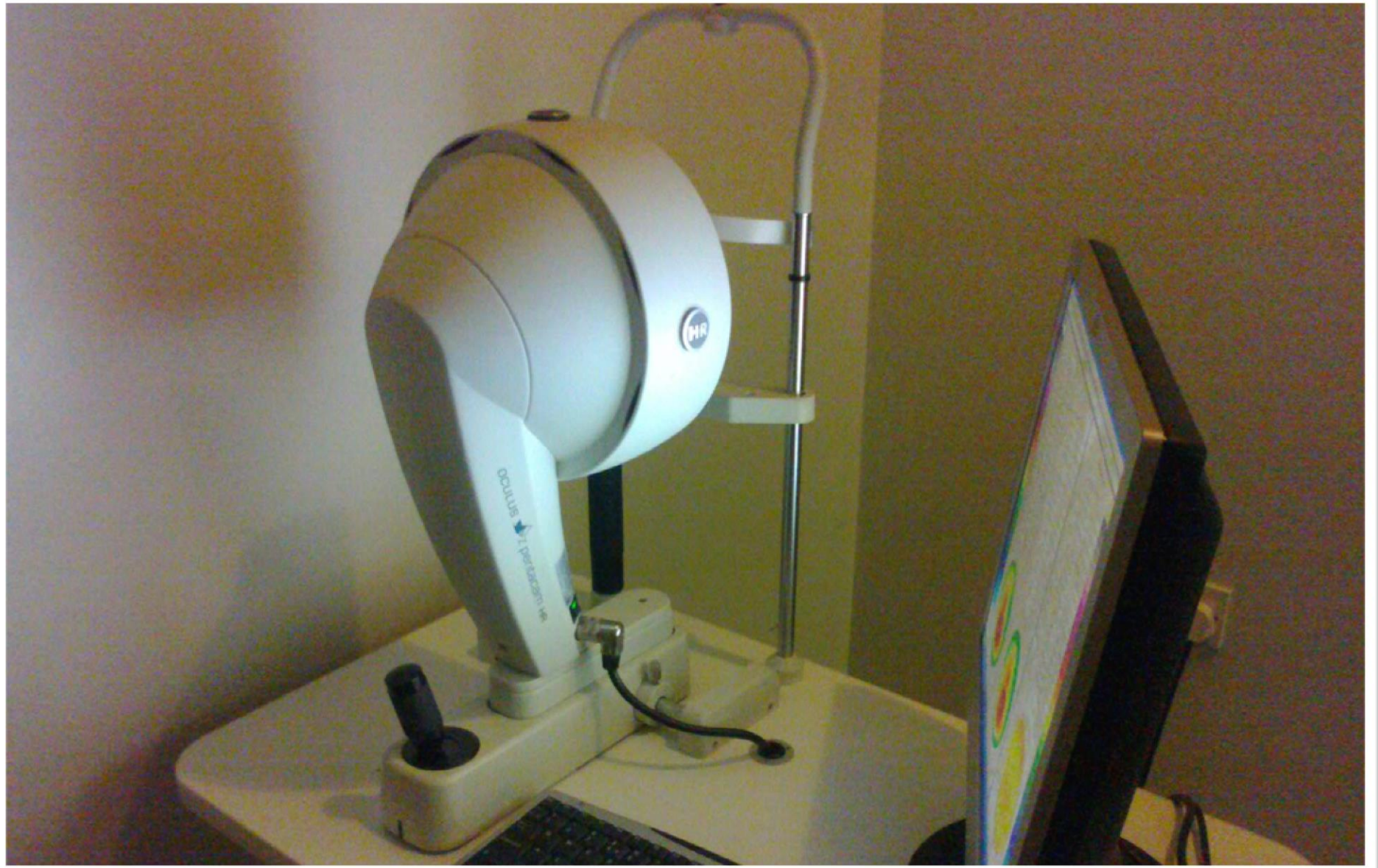


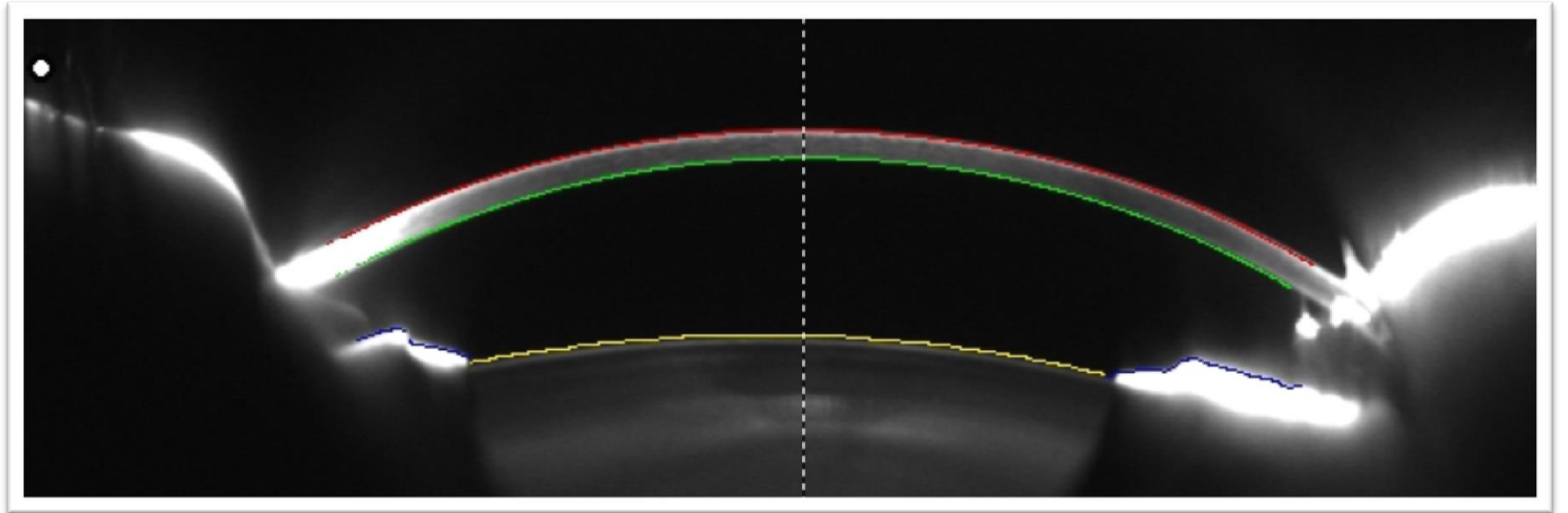
The first intraocular lens
for the treatment of cataract
was implanted by
MR. HAROLD RIDLEY FRS
at St. Thomas' Hospital
on 8th February 1950

Our Research

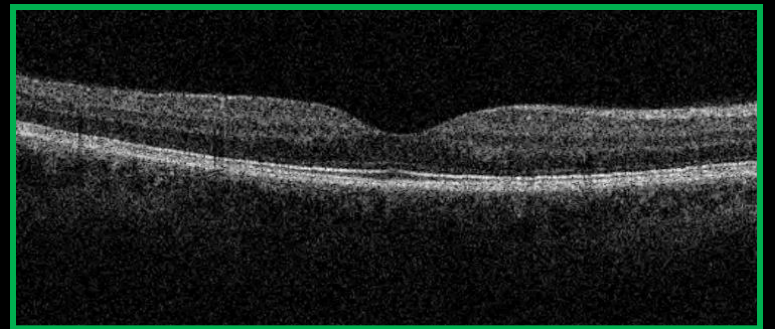
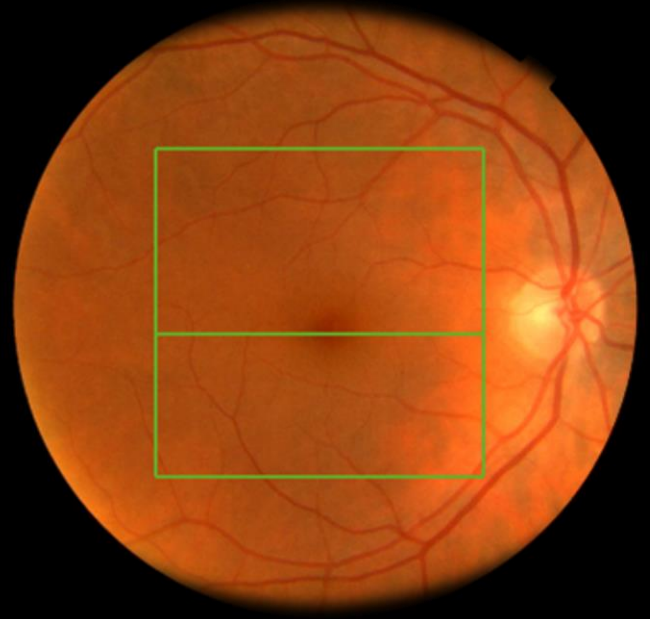
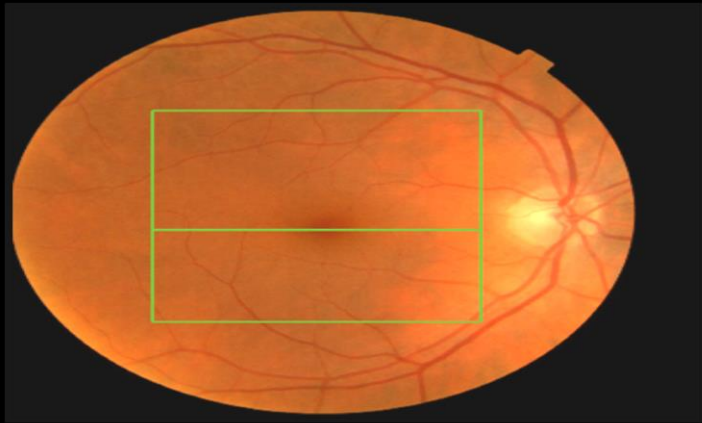
- **Examining the eyes of people with Alport Syndrome**
 - Non-invasive tests
 - High resolution corneal and lens imaging
 - High resolution retinal imaging

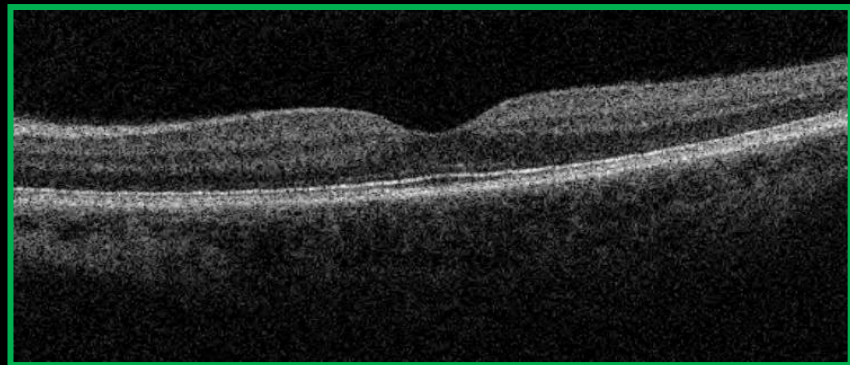
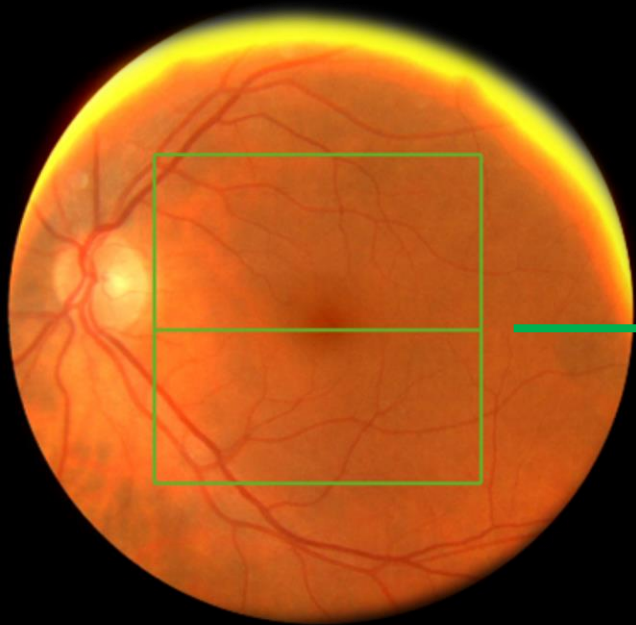
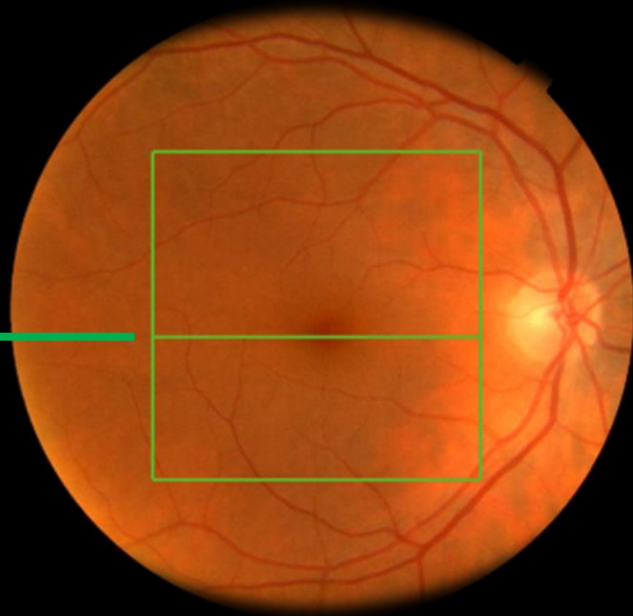
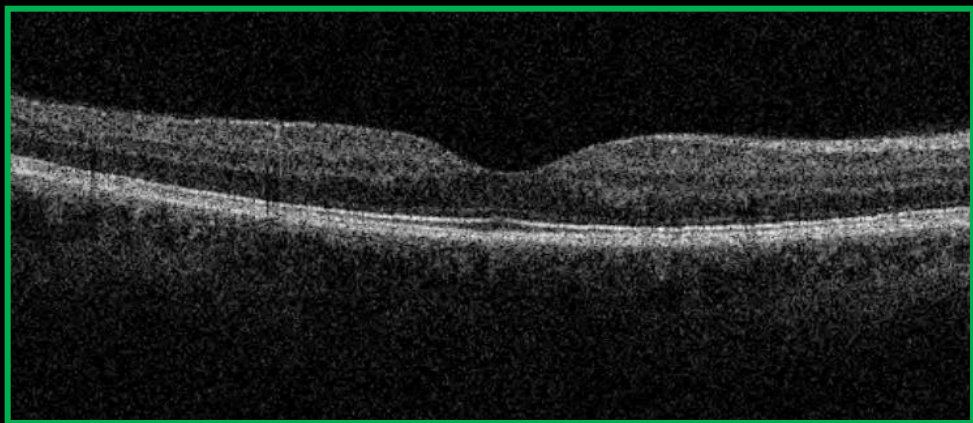
 - *Improve understanding of how Alport affects the eye*
 - *Help in **diagnosis** of Alport syndrome when suspected*

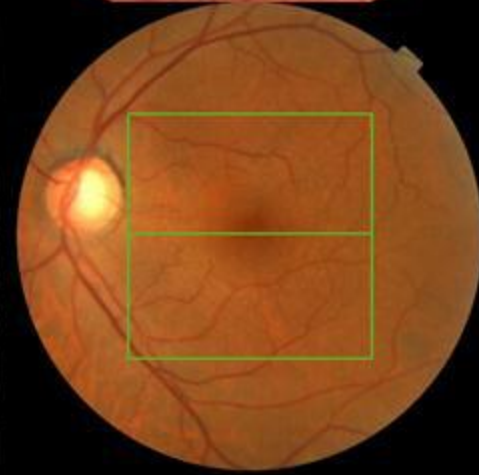
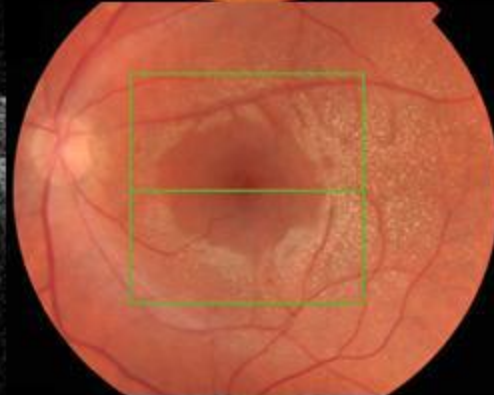
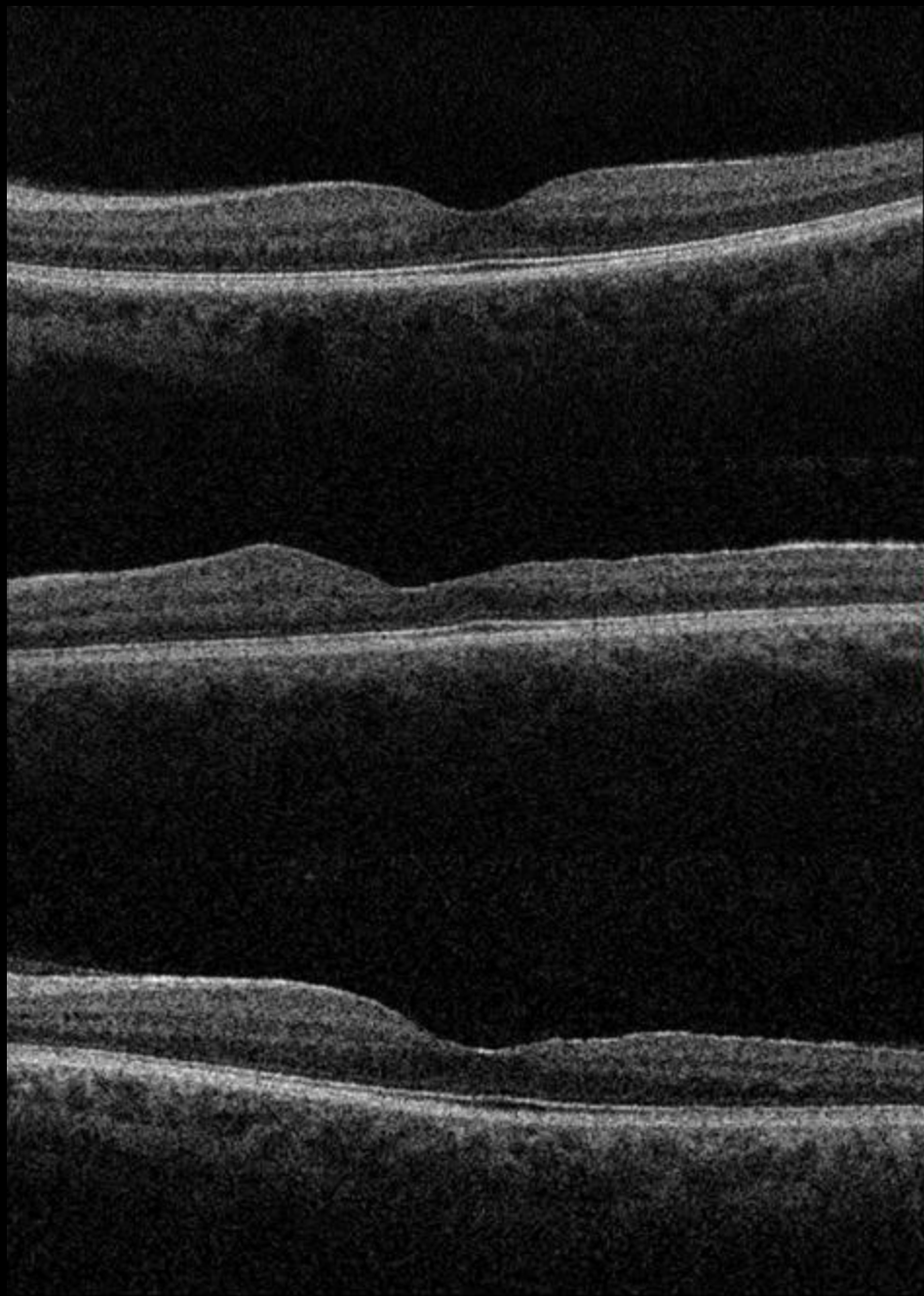












OMAR.MAHROO@KCL.AC.UK

Thanks for listening!